



Pups' Press

News from Deane-Porter
(September 10, 2025)



Upcoming Events

September 11, 2025 - Wear red, white, and blue.

September 17, 2025 - [REF Golf Outing](#) (Click the link for more information!)

September 18, 2025 - Back to School Night! (6:30-8:30pm)

September 23, 2025 - School closed.

September 26, 2025 - Spirit Day! Wear your purple, Pups!

September 30, 2025 - Clubs go live!

6 Day Cycle (September)



Save the Date!

Back to School Night
September 18th
6:30-8:30pm



Deane-Porter Back to School Night

Thursday, September 18, 2025

6:30-8:30pm

During any downtime, please write a note to your Pup and place it in the mailbox.
We will deliver the messages.

Time	Event	Location(s)
6:30pm	Doors open. Please visit REF and PTO stations.	Lobby
6:30-6:50pm	PreKindergarten	PKA - 504 PKH - 506
6:55-7:15pm	Grade 2	2B - 200 2D/M - 306 2H - 310 2K - 304 2Mc - 308 2M - 312
7:20-7:40pm	Grade 3	3B - 402 3H - 404 3R - 314 3S - 403 3S/G - 316
7:30-7:50pm	Specials Please meet and greet our specialists.	Cafeteria
7:45-8:05pm	Kindergarten	KH - 508 KL - 502 KH - 507 KS/G - 500 KVS - 505
8:05-8:25pm	Grade 1	1D - 201 1F - 203 1M - 401 1N/H - 302 1O - 202

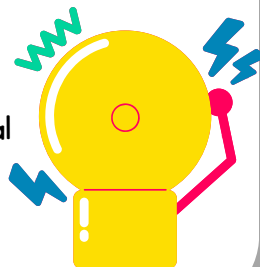
Dismissal Changes

Please see this helpful [guide](#) for information related to entering dismissal changes.

Keep in mind that the most common errors are:

- not including two digits for the hour and minutes (e.g., 01:00pm)
- not changing the dropdown for the time, because AM is the default (e.g., 01:00am is an invalid time).

Thank you for completing dismissal changes before 2:30pm on regular days and 12:00pm on early dismissal days.



DON'T FORGET

Do not double park on Narumson or any other street to drop off or pick up students. Police will be monitoring this.

When picking up at DP back door please wait until the 3:05pm bell to walk on to the property to pick up students.

When picking up or dropping off, please be alert to the pedestrian crossing signs/areas as we have many bikers and walkers to/from school.

Other than rolling car lines, do not use the faculty parking lots at FD, DP, and MPR for pick up or drop off.

Please be certain your Pup knows his/her PIN code for the cafeteria.

